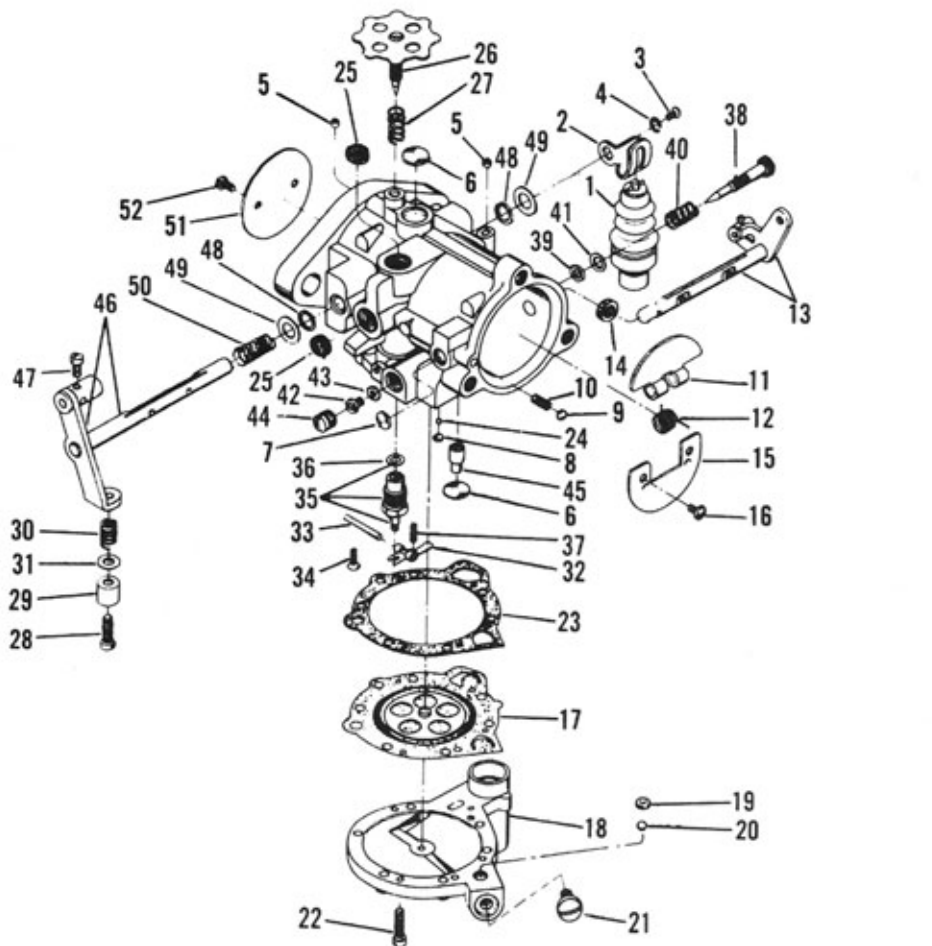


# HD CARBURETOR (1967-1970)



- |   |   |  |
|---|---|--|
| 1. Accelerating pump                        | 19. Accelerating pump check ball retainer | 37. Inlet control lever tension spring   |
| 2. Accelerating pump lever                  | 20. Accelerating pump check ball          | 38. Intermediate adjusting screw         |
| 3. Accelerating pump lever screw            | 21. Diaphragm cover plug screw            | 39. Intermediate adjusting screw packing |
| 4. Accelerating pump lever screw lockwasher | 22. Diaphragm cover screws                | 40. Intermediate adjusting screw spring  |
| 5. Channel plug                             | 23. Diaphragm cover gasket                | 41. Intermediate adjusting screw washer  |
| 6. Welch plug                               | 24. Economizer check ball                 | 42. Main jet                             |
| 7. Welch plug                               | 25. Fuel filter screen                    | 43. Main jet gasket                      |
| 8. Welch plug                               | 26. Idle adjustment screw                 | 44. Main jet plug screw                  |
| 9. Choke shaft friction ball                | 27. Idle adjustment screw spring          | 45. Main nozzle check valve              |
| 10. Choke shaft friction spring             | 28. Throttle stop screw                   | 46. Throttle shaft assembly              |
| 11. Choke valve (top)                       | 29. Throttle stop screw cup               | 47. Throttle lever wire block screw      |
| 12. Choke valve spring                      | 30. Throttle stop screw spring            | 48. Dust seal                            |
| 13. Choke shaft assembly                    | 31. Throttle stop screw spring washer     | 49. Washer                               |
| 14. Choke shaft dust seal                   | 32. Inlet control lever                   | 50. Throttle shaft spring                |
| 15. Choke valve (bottom)                    | 33. Inlet control lever pin               | 51. Throttle valve                       |
| 16. Choke valve screws                      | 34. Inlet control lever screw             | 52. Throttle valve screws                |
| 17. Diaphragm                               | 35. Inlet needle and seat                 |  |
| 18. Cover                                   | 36. Inlet needle seat gasket              |  |

# **HARLEY-DAVIDSON PARTS & ACCESSORIES**

*Click on links below*

*[Harley Davidson Dyna Models Parts & Accessories](#)*

*[Harley Davidson Softail Parts & Accessories](#)*

*[Harley Davidson Sportster Parts & Accesories](#)*

*[Harley Davidson 500 & 750 Street Parts & Accessories](#)*

*[Harley Davidson Touring Models Parts & Accessories](#)*

*[Harley Davidson Trike Parts & Accessories](#)*

*[Harley Davidson V-Rod Parts & Accessories](#)*

*[Harley Davidson Closeout Parts & Accessories](#)*

*[Closeout Motorcycle Helmets](#)*

*[Closeout Motorcycle Jackets](#)*

*[Japanese Motorcycle Original Equipment Parts](#)*

*[Dirt Bike Parts & Accessories](#)*

*[Save On All Harley Motorcycle Tires](#)*

*[Cycle Gear – Free Shipping](#)*

*[Free Shipping On All Motorcycles](#)*

*[Discount Auto Parts – Free Shipping](#)*



*[www.ClassicCycles.org](http://www.ClassicCycles.org)*