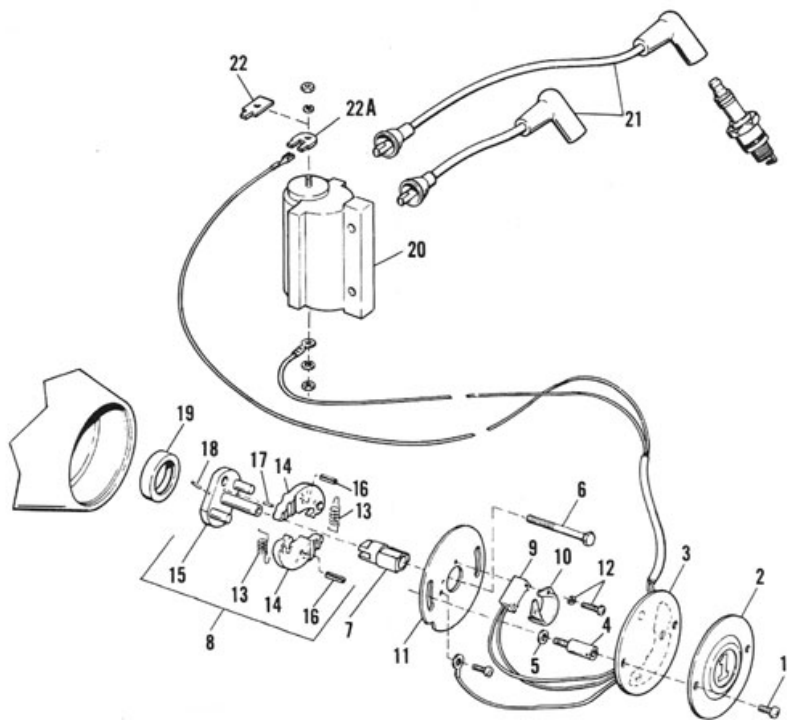


IGNITION SYSTEM (LATE 1978-1979)



- | | |
|--------------------------|----------------------------------|
| 1. Cover screw (2) | 13. Flyweight spring |
| 2. Ignition timer cover | 14. Flyweight (2) |
| 3. Ignition module | 15. Advance assembly base |
| 4. Timer plate screw | 16. Flyweight roll pin (2) |
| 5. Washer (2) | 17. Cam stop roll pin |
| 6. Trigger rotor bolt | 18. Register roll pin |
| 7. Trigger rotor | 19. Camshaft oil seal |
| 8. Advance assembly | 20. Ignition coil |
| 9. Sensor | 21. Spark plug cable (2) |
| 10. Shield | 22. Ignition coil terminal (FL) |
| 11. Timer plate | 22A. Ignition coil terminal (FX) |
| 12. Screw and washer (2) | |

