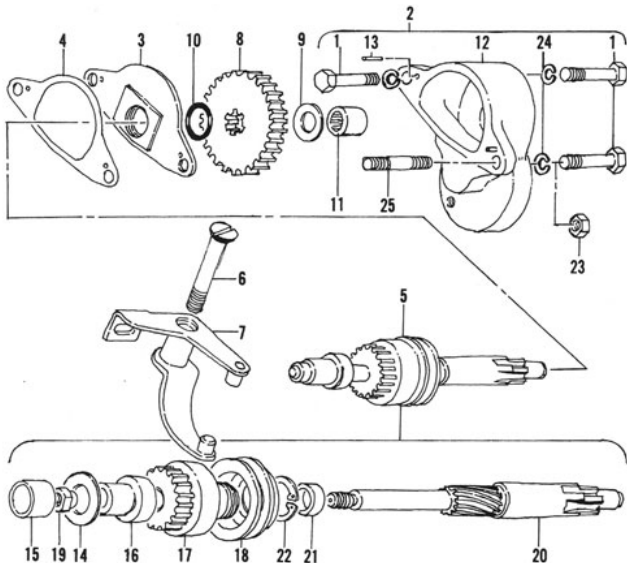


STARTER DRIVE HOUSING (TYPE I)



- | | |
|-------------------------------------|--|
| 1. Bolt | 14. Thrust washer |
| 2. Drive gear housing assembly | 15. Bearing (in primary cover) |
| 3. Oil defector | 16. Pinion shaft collar |
| 4. Gasket | 17. Pinion gear |
| 5. Pinion gear and shaft assembly | 18. Shifter collar |
| 6. Shifter lever screw | 19. Pinion shaft nut
(left-hand thread) |
| 7. Shifter lever | 20. Pinion shaft |
| 8. Drive gear | 21. Spacer |
| 9. Thrust washer | 22. Circlip |
| 10. O-ring | 23. Nut |
| 11. Bearing (in drive gear housing) | 24. Lockwasher |
| 12. Drive gear housing | 25. Stud |
| 13. Locating pin | |

HARLEY-DAVIDSON PARTS & ACCESSORIES

Click on links below

[Harley Davidson Dyna Models Parts & Accessories](#)

[Harley Davidson Softail Parts & Accessories](#)

[Harley Davidson Sportster Parts & Accesories](#)

[Harley Davidson 500 & 750 Street Parts & Accessories](#)

[Harley Davidson Touring Models Parts & Accessories](#)

[Harley Davidson Trike Parts & Accessories](#)

[Harley Davidson V-Rod Parts & Accessories](#)

[Harley Davidson Closeout Parts & Accessories](#)

[Closeout Motorcycle Helmets](#)

[Closeout Motorcycle Jackets](#)

[Japanese Motorcycle Original Equipment Parts](#)

[Dirt Bike Parts & Accessories](#)

[Save On All Harley Motorcycle Tires](#)

[Cycle Gear – Free Shipping](#)

[Free Shipping On All Motorcycles](#)

[Discount Auto Parts – Free Shipping](#)



www.ClassicCycles.org