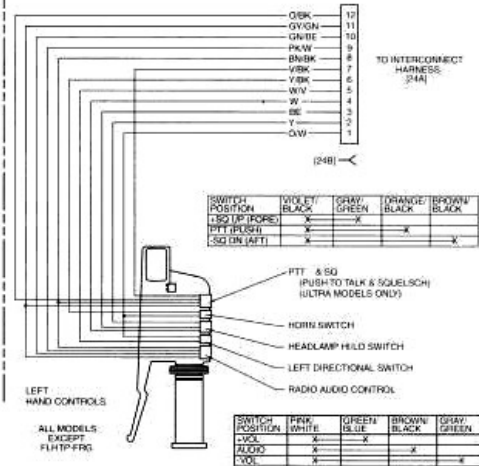


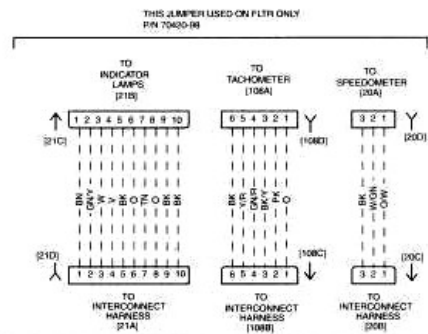
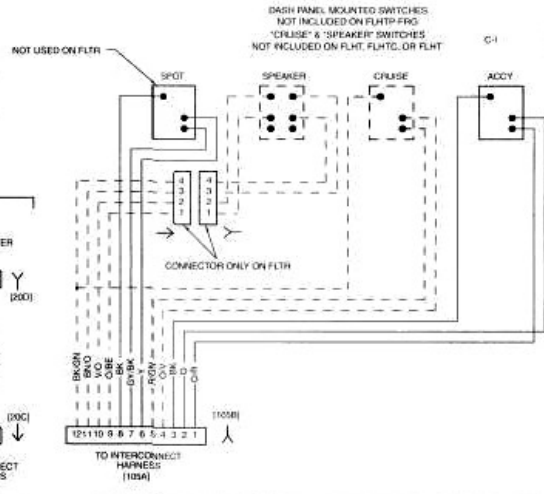
SWITCH POSITION	BROWN/WHITE	PINK/WHITE	VIOLET/BLACK	GRAY/WHITE
UP	X	X	X	X
MODE	X	X	X	X
DOWN	X	X	X	X

SWITCH POSITION	RED/BLACK/GRAY/SET	WHITE/BLACK/SET	WHITE/BLUE/SET
RESUME	X	X	X



SWITCH POSITION	VIOLET/BLACK	GRAY/GREEN	ORANGE/BLACK	BROWN/BLACK
LS (LEFT FORK)	X	X	X	X
PTT (UP/ST)	X	X	X	X
SG (ON LEFT)	X	X	X	X

SWITCH POSITION	PINK/WHITE	GREEN/BLUE	BROWN/BLACK	GRAY/GREEN
ALONG	X	X	X	X
COOL	X	X	X	X



1998 FLHT, FLHTC, FLHTC-I, FLHTC Ultra-I, FLTR and FLTR-I, DOMESTIC and INTERNATIONAL Models, Handlebar Controls, Speedometer, Tachometer and Indicator Lamps

HARLEY-DAVIDSON PARTS & ACCESSORIES

Click on links below

Harley Davidson Dyna Models Parts & Accessories

Harley Davidson Softail Parts & Accessories

Harley Davidson Sportster Parts & Accesories

Harley Davidson 500 & 750 Street Parts & Accessories

Harley Davidson Touring Models Parts & Accessories

Harley Davidson Trike Parts & Accessories

Harley Davidson V-Rod Parts & Accessories

Harley Davidson Closeout Parts & Accessories

Closeout Motorcycle Helmets

Closeout Motorcycle Jackets

Japanese Motorcycle Original Equipment Parts

Dirt Bike Parts & Accessories

Save On All Harley Motorcycle Tires

Cycle Gear – Free Shipping

Free Shipping On All Motorcycles

Discount Auto Parts – Free Shipping



www.ClassicCycles.org